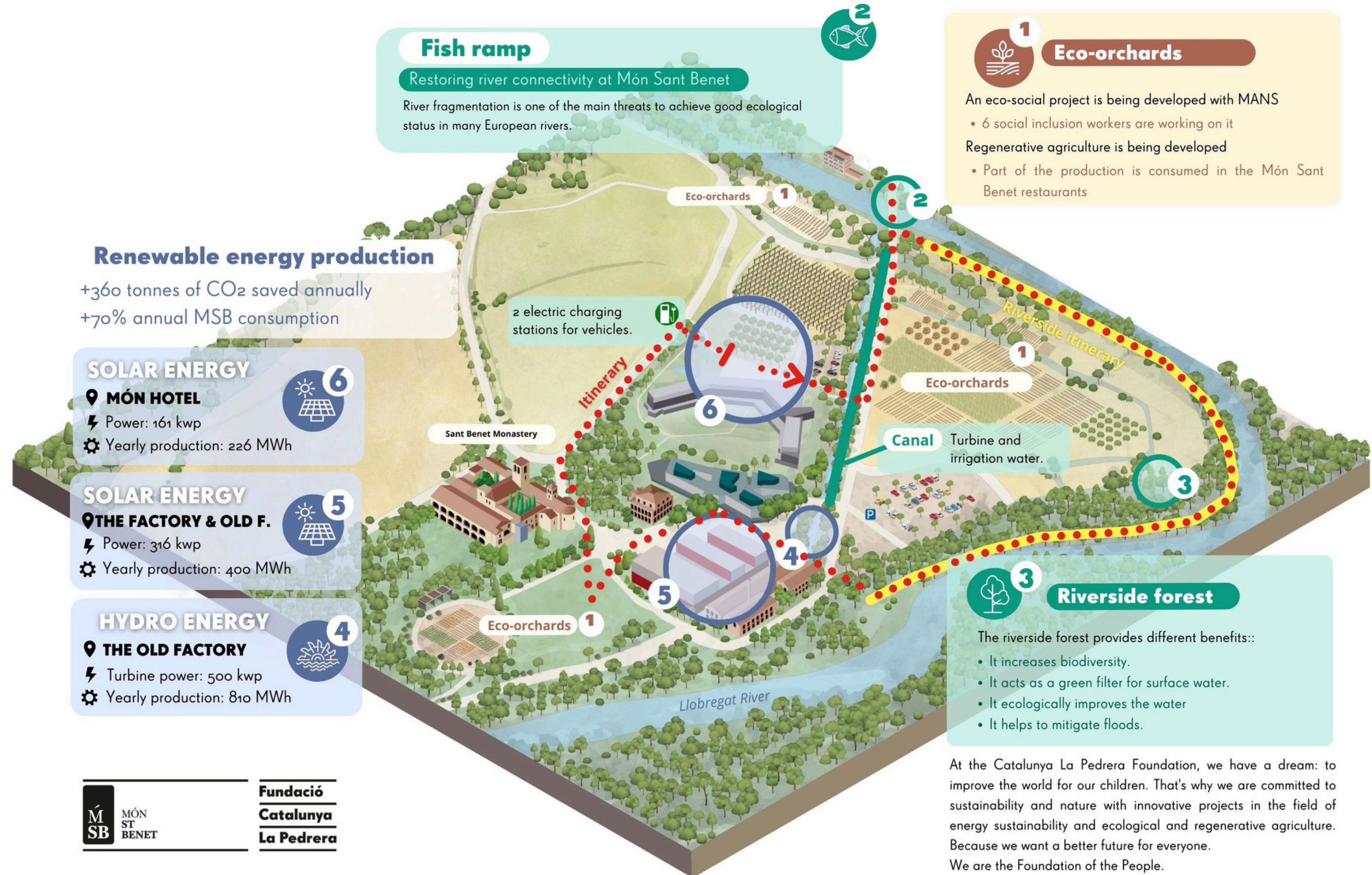


Sustainability in **MÓN SANT BENET**



Fish ramp

Restoring river connectivity at MÓN Sant Benet

River fragmentation is one of the main threats to achieve good ecological status in many European rivers.

Eco-orchards

An eco-social project is being developed with MANS

- 6 social inclusion workers are working on it
- Regenerative agriculture is being developed
- Part of the production is consumed in the MÓN Sant Benet restaurants

Renewable energy production

+360 tonnes of CO₂ saved annually
+70% annual MSB consumption

SOLAR ENERGY

📍 MÓN HOTEL

- ⚡ Power: 161 kwp
- ⚙️ Yearly production: 226 MWh

SOLAR ENERGY

📍 THE FACTORY & OLD F.

- ⚡ Power: 316 kwp
- ⚙️ Yearly production: 400 MWh

HYDRO ENERGY

📍 THE OLD FACTORY

- ⚡ Turbine power: 500 kwp
- ⚙️ Yearly production: 810 MWh

2 electric charging stations for vehicles.

Canal Turbine and irrigation water.

Riverside forest

The riverside forest provides different benefits::

- It increases biodiversity.
- It acts as a green filter for surface water.
- It ecologically improves the water
- It helps to mitigate floods.

At the Catalunya La Pedrera Foundation, we have a dream: to improve the world for our children. That's why we are committed to sustainability and nature with innovative projects in the field of energy sustainability and ecological and regenerative agriculture. Because we want a better future for everyone. We are the Foundation of the People.